

XOOLINE™ HYDRA White IP40^A

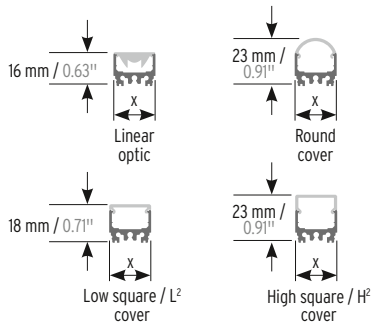


24 V compact linear LED luminaire in IP40 offering tremendous modularity and ease of installation. Extruded and anodized aluminum housing profile with male/female connectors fed on the luminaire's sides and attached mounting accessories. Diffuse screwed end caps for a perfect fixture to fixture light overlap. Allows the use of 11 high quality optics. Clear, diffuse or opal optics for soft light settings and linear lenses from 10° for wall grazing or 30° and 60° for wide flood illumination with precise light control. Light source assembled using state of the art automated Reel to Reel (R2R) production process supporting LED Linear™ Tj Away® thin flexible circuit board Technology. In combination with ceramic LED packages a thermal resistivity of 16.3 K/W is achieved for an optimal heat dissipation (junction to profile)

which guarantees an outstanding lifetime of > 60,000 hrs L80/B10. Embeds high quality Japanese LEDs with 3 step MacAdams (SDCM3) binning centered on target CCT (One Bin Only) with an extended photometric code of Wxxx/339 ensuring an exceptional color consistency over the rated lifetime. Premium color rendition with a CRI of 95 and TM-30-15 up to R_r = 91 / R_g = 100 ensuring a remarkable light quality. Consistent light intensity all along the luminaire length is obtained thanks to active current regulation operated by dedicated integrated circuits (ICs) on each step. Protected against electrostatic discharge +/- 2,000 V and polarity miswiring. Fully PWM dimmable for frequency > 0 Hz up to 2 kHz (flicker free for frequency higher than 1.2 kHz according to IEEE P1789 standard). Engineered and produced in Germany.

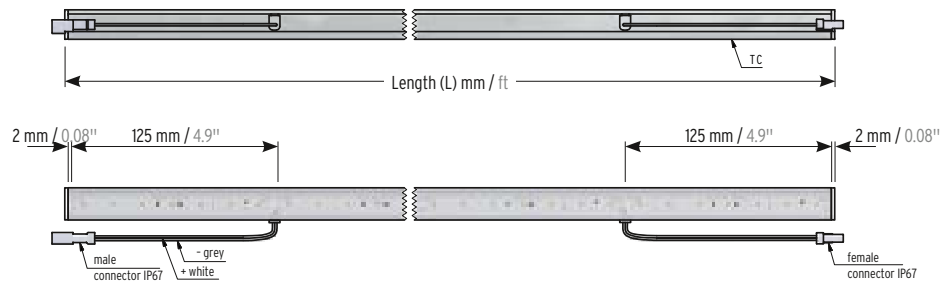
Dimensions & available lengths

Contour 004 x = 19.5 mm / 0.77"



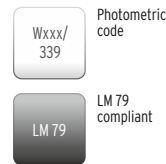
Fixture build to length (not field cuttable):

HYDRA LD	HYDRA HD	End pieces
L _{min} : 380 mm L _{min} : 1.24'	L _{min} : 380 mm L _{min} : 1.24'	255 mm 10"
L _{max} : 2,005 mm L _{max} : 6.57'	L _{max} : 2,005 mm L _{max} : 6.57'	(male connector only)
in 125 mm increments in 4.92" increments	in 62.5 mm increments in 2.46" increments	



Electrical & output data

Voltage	24 Volt (23 V _{min} , 25 V _{max})
Temperature ^c	T _{cmin} = -25°C / -13°F, T _{cmax} = specific, see Table below
Storage temperature	T _{smin} = -30°C / -22°F, T _{smax} = 85°C / 185°F
Ambient temperature	T _{amin} = -25°C / -13°F, T _{amax} = specific, see Table below
CRI / R9	up to 95 / up to 65



XOOLINE™ HYDRA	indirect view (visible pixillation)				
	LD5	LD10	LD15	LD25	LD40
Power (W/m / W/ft) ⁹	5 / 1.5	10 / 3.1	15 / 4.6	25 / 7.6	40 / 12.2
Efficacy (lm / W) ⁹ @ W850	132	131	140	137	103
max. serial run length (m / ft)	7.5 / 24.6	5 / 16.4	4 / 13.1	3 / 9.8	2 / 6.6
Temperature T _c -point (T _{cmax}) ^c	70°C / 158°F	70°C / 158°F	70°C / 158°F	75°C / 167°F	85°C / 185°F
max. ambient temperature (T _{amax})	50°C / 122°F	50°C / 122°F	50°C / 122°F	45°C / 113°F	35°C / 95°F

	direct view (less pixillation or dot free, check order code)				
	HD6	HD10	HD15	HD25	HD36
Power (W/m / W/ft) ⁹	6 / 1.8	10 / 3.1	15 / 4.6	25 / 7.6	36 / 11
Efficacy (lm / W) ⁹ @ W850	132	131	140	137	139
max. serial run length (m / ft)	5 / 16.4	5 / 16.4	4 / 13.1	3 / 9.8	2 / 6.6
Temperature T _c -point (T _{cmax}) ^c	70°C / 158°F	70°C / 158°F	70°C / 158°F	75°C / 167°F	85°C / 185°F
max. ambient temperature (T _{amax})	50°C / 122°F	50°C / 122°F	50°C / 122°F	45°C / 113°F	35°C / 95°F

Color temperature		indirect view (visible pixillation)				
		LD5	LD10	LD15	LD25	LD40
		low output → high output				
		lumen/meter (lm/m) ⁸ lumen/feet (lm/ft) ⁸ @ Clear cover ⁹				
● W820	2,000 K	380 / 115	760 / 231	1,220 / 371	1,980 / 603	- / -
● W822	2,200 K	440 / 133	870 / 264	1,390 / 423	2,270 / 691	- / -
● W825	2,500 K	500 / 151	1,000 / 304	1,590 / 484	2,590 / 788	3,370 / 1,026
● W827	W927 2,700 K	450 / 136	1,060 / 322	1,690 / 514	2,750 / 837	3,560 / 1,084
● W830	W930 3,000 K	450 / 136	1,120 / 340	1,790 / 545	2,910 / 886	3,780 / 1,151
● W835	W935 3,500 K	470 / 142	1,180 / 359	1,880 / 572	3,060 / 932	4,020 / 1,224
● W840	W940 4,000 K	480 / 145	1,200 / 365	1,920 / 584	3,130 / 953	4,120 / 1,255
● W850	5,000 K	660 / 200	1,310 / 398	2,100 / 639	3,420 / 1,041	4,130 / 1,258

	direct view (less pixillation or dot free, check order code)					
	HD6	HD10	HD15	HD25	HD36	
		low output → high output				
		lumen/meter (lm/m) ⁸ lumen/feet (lm/ft) ⁸ @ Clear cover ⁹				
		460 / 139	760 / 231	1,220 / 371	1,980 / 603	2,900 / 883
		520 / 157	870 / 264	1,390 / 423	2,270 / 691	3,310 / 1,008
		600 / 182	1,000 / 304	1,590 / 484	2,590 / 788	3,780 / 1,151
		530 / 161	890 / 270	1,690 / 514	2,750 / 837	4,010 / 1,221
		540 / 164	910 / 276	1,790 / 545	2,910 / 886	4,260 / 1,297
		560 / 170	930 / 282	1,880 / 572	3,060 / 932	4,470 / 1,361
		570 / 173	960 / 292	1,920 / 584	3,130 / 953	4,570 / 1,392
		790 / 240	1,310 / 398	2,100 / 639	3,420 / 1,041	5,000 / 1,523

^A Without cover the IP protection level is reduced from IP40 to IP10.

⁹ The given data are typical values. Due to tolerances of the production process and the electrical components, values for light output and electrical power can vary up to 10%.

^c The T_c-point should be measured in thermal equilibrium according to IEC EN 60598-1.

⁸ Sample values.

! Note: -40% luminous flux at opal and -25% with diffuse cover.

Please click here to configure your fixture online

Order code

XOOLINE™ HYDRA White IP40

Your order code	XOOLINE HYD	___	W_	___	___	___	___	IP_
Order code example	XOOLINE HYD	HD10	W9	27	1880	OL	CL45	IP40

LED tape

HYDRA LD5	LD5
HYDRA LD10	LD10
HYDRA LD15	LD15
HYDRA LD25	LD25
HYDRA LD40	LD40
HYDRA HD6	HD6
HYDRA HD10	HD10
HYDRA HD15	HD15
HYDRA HD25	HD25
HYDRA HD36	HD36

Color rendering

> 80	8
> 90 (only LD5, HD6, HD10)	9

Color temperature

2,000 K	20
2,200 K	22
2,500 K	25
2,700 K	27
3,000 K	30
3,500 K	35
4,000 K	40
5,000 K	50

Length

HYDRA LD

L_{min}: 380 mm (1.24'); L_{max}: 2,005 mm (6.57');
in 125 mm (4.92") increments

End pieces: 255 mm (10"); male connector only

HYDRA HD

L_{min}: 380 mm (1.24'); L_{max}: 2,005 mm (6.57');
in 62.5 mm (2.46") increments

Cover / Lens options (DIN 5040:A40)

No cover / lens	NC
10° Diffuse	10D
30° Diffuse	30D
60° Diffuse	60D
Opal round cover*	OR
Diffuse round cover	DR
Clear round cover	CR
Opal low square cover	OL
Diffuse low square cover	DL
Clear low square cover	CL
Opal high square cover*	OH
Diffuse high square cover	DH

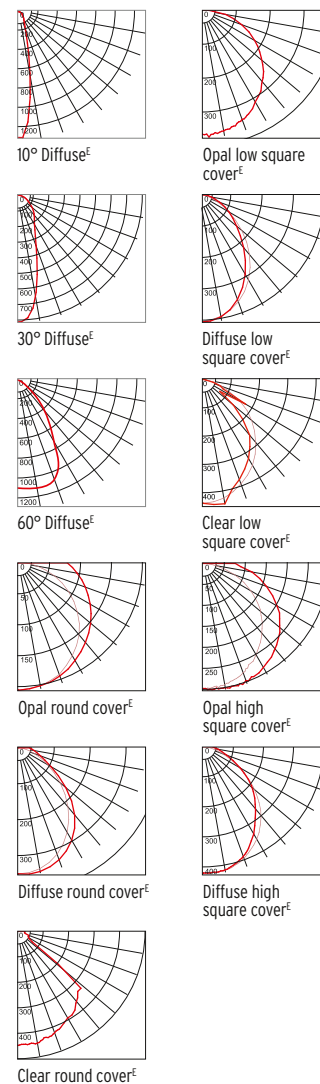
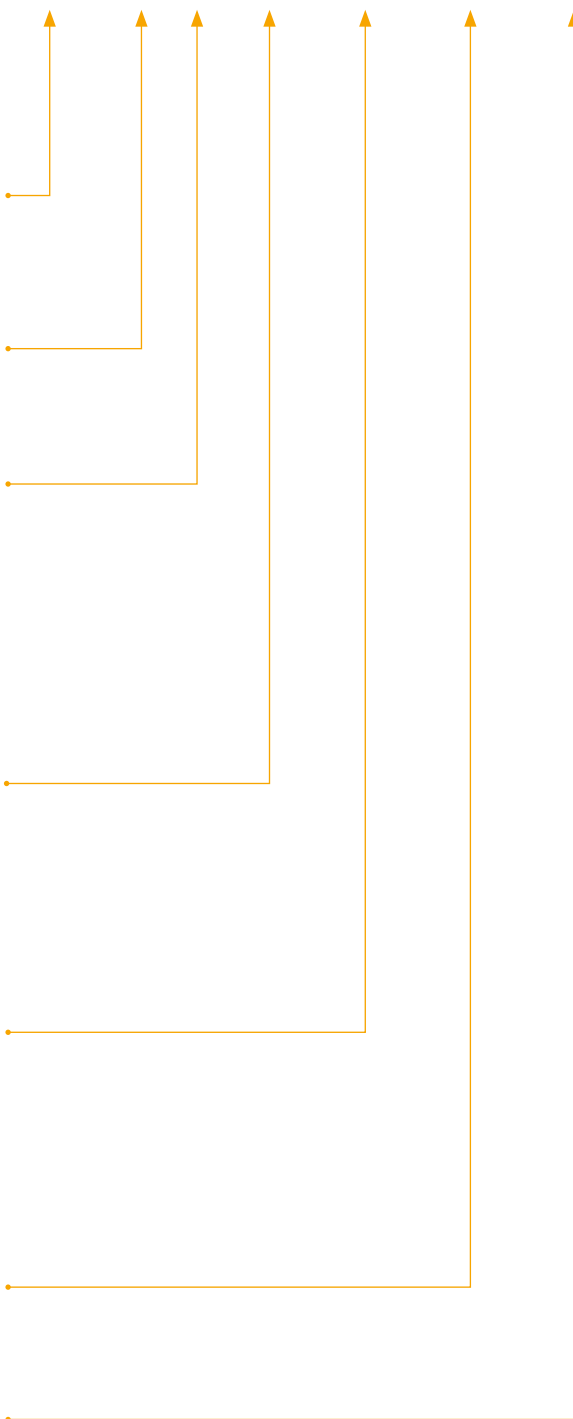
Profile / Clips

Mounting profile	MP
Clip 0°	CL0
Clip 15°	CL15
Clip 30°	CL30
Clip 45°	CL45
Plastic clip	PCL
Adjustable mounting clip	AMC

Ingress protection

IP10 (without optic / cover)	IP10
IP40	IP40

*Dot free with HD LED tapes



€ DIN 5040:A40

Please choose your accessories

Lead connector from driver	Art.-#	Recommended power supply	Art.-#
<input type="checkbox"/> VarioCon Female Mini 2 x 0.34 mm ² , 2 m / 6.56' IP67	15000142	<input type="checkbox"/> Power Supply Unit IP20	16000178
<input type="checkbox"/> VarioCon Extension Mini 2 x 0.34 mm ² , 2 m / 6.56' IP67	15000144	Recommended control unit	Art.-#
<input type="checkbox"/> VarioCon Female Mini Protection Cap Mono IP67	15000218	<input type="checkbox"/> Control System White/IQ-White	16000268-DT6